

NORTH-WEST QUARTER

HUNTSBURG TP.

NORTH-WEST QUARTER

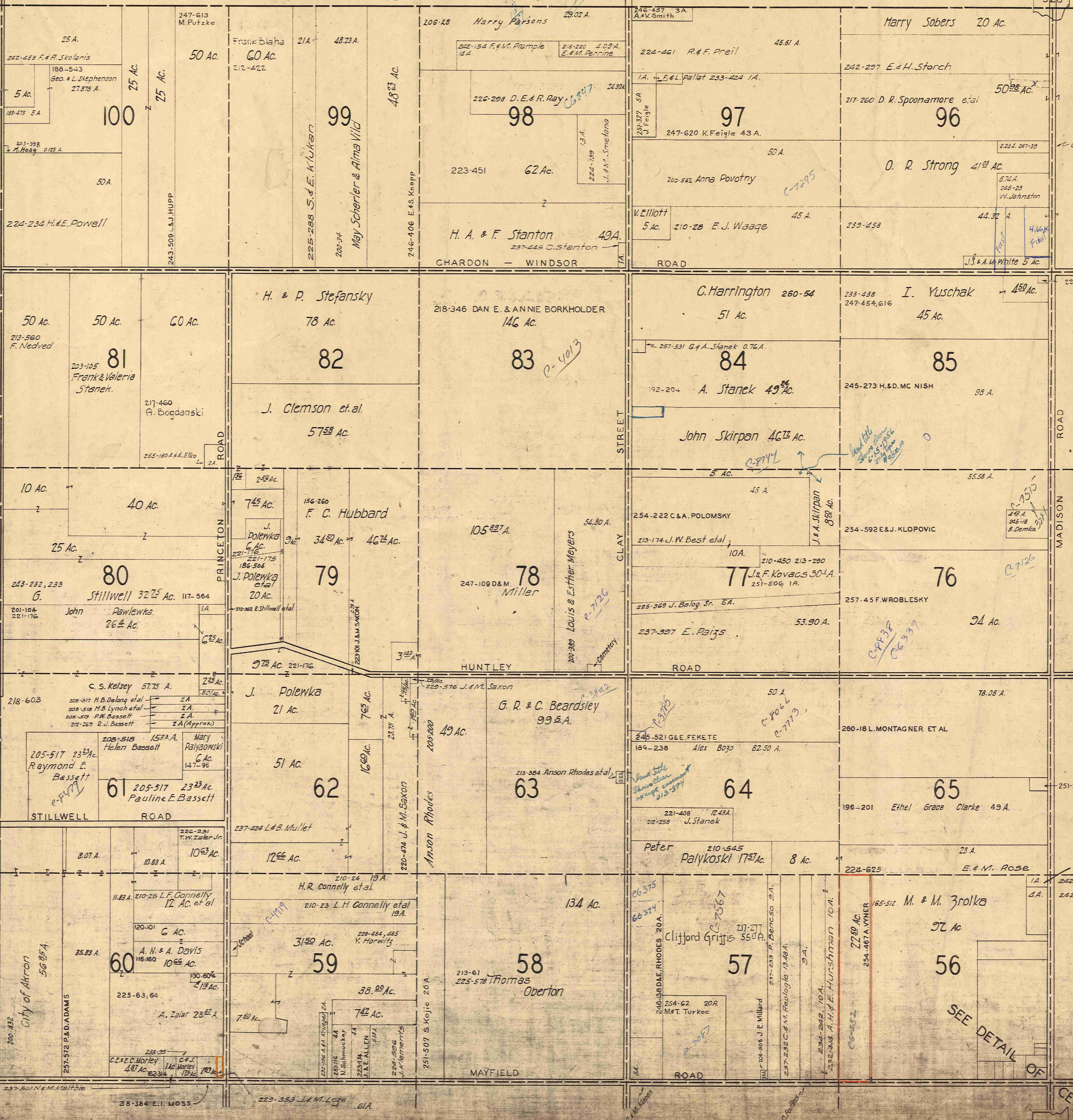
HAMB DEN TR.

MONTVILLE T.P.

528

9-3-37 Katherine Horsh  
233-281  
233-397  
C-21726  
C-21726  
C-21726

CLARRIDON TOWNSHIP



SCALE 1 in. = 10 ch.

MAR. 1, 1954

SEE DETAIL OF

U.S. 322

U.S. 322

8 N.W.

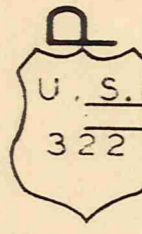
528



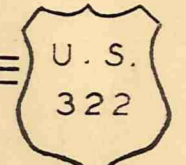
SOUTH-WEST QUARTER

# HUNTSBURG TP.

SOUTH-WEST QUARTER



528



O.L.#41 #1. 255-131 A.M. Kuckrow 2A.  
O.L.#42 #2. 257-445 R.B. Hummel 1A.

C L A R I D O N T O W N S H I P

SEE DETAIL OF CENTER

35480  
11100  
15321000  
1382880  
382580  
43639200  
1000000  
1309176  
1872284  
10537076

580  
1309176  
382580  
35280

251  
3472  
20952  
20952  
238472  
1140  
126472

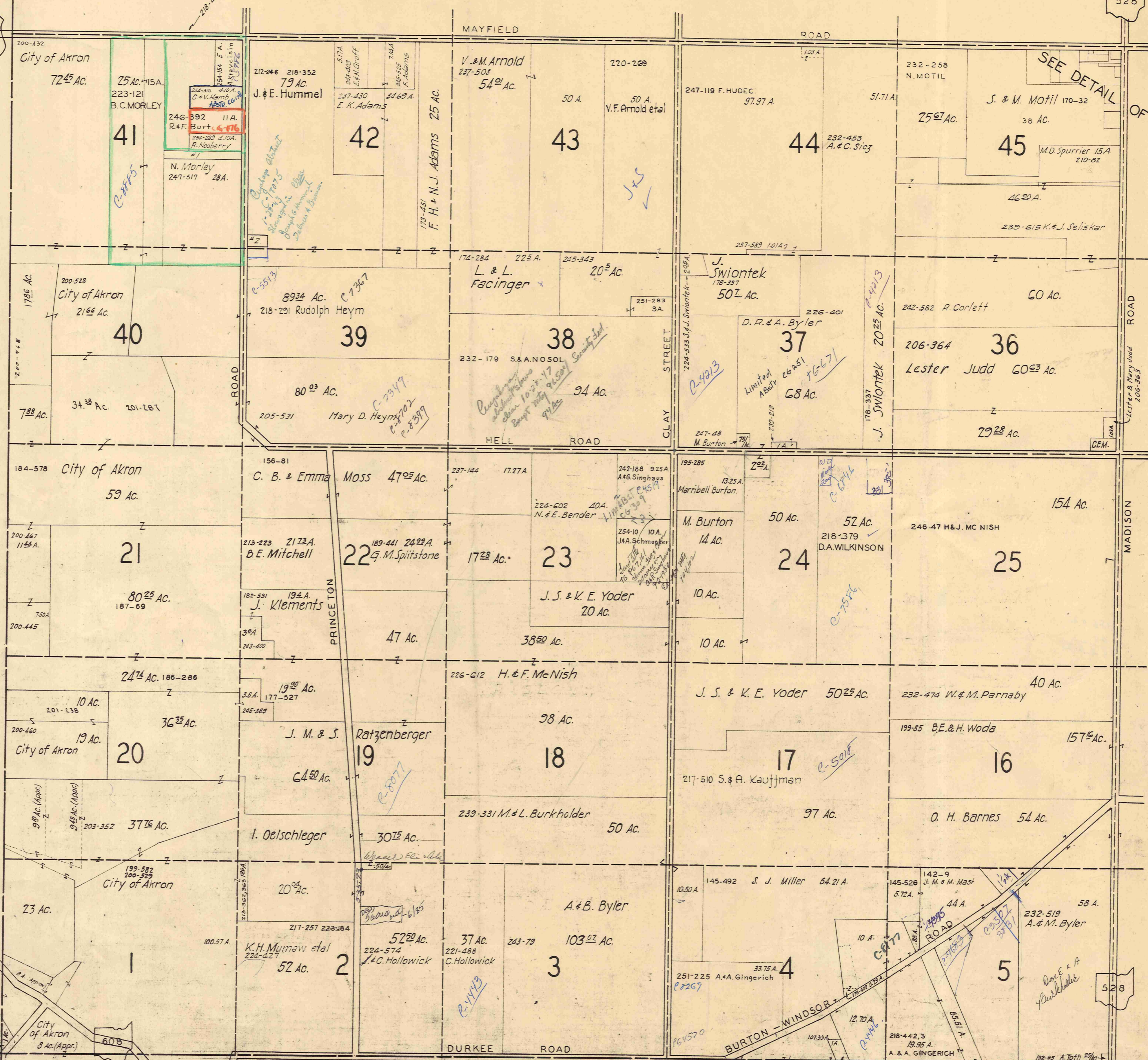
284.31

4760  
1140  
6160

SCALE 1IN.=10CH.

MAR. 1, 1954

8SW

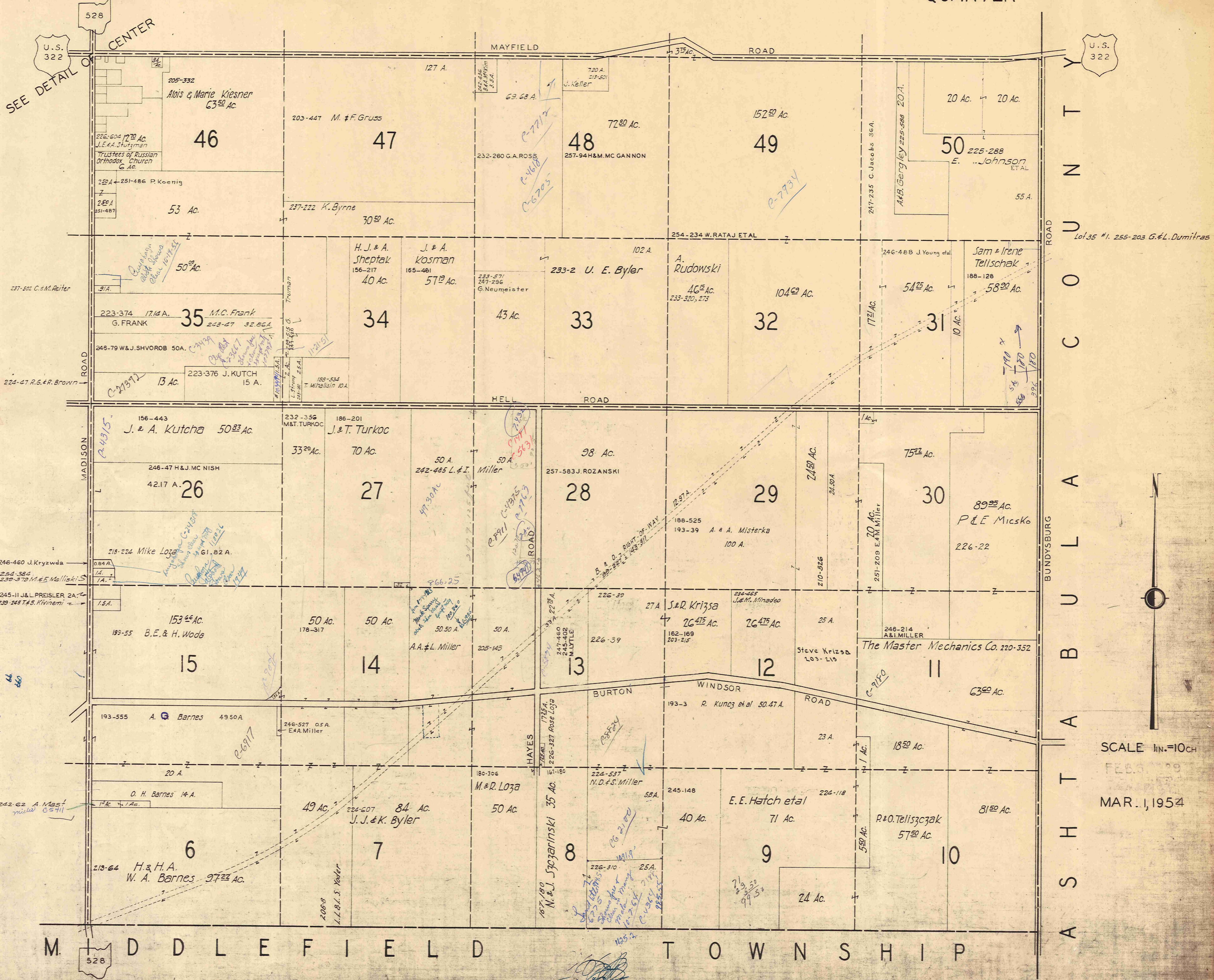


BURTON TP. M I D D L E F I E L D T O W N S H I P

SOUTH-EAST QUARTER

# HUNTSBURG T.P.

SOUTH-EAST QUARTER



Handwritten notes on the left side of the map:

965  
111  
111  
1466  
1769  
8796  
8796  
96756  
96756  
109498  
44  
460

SCALE 1 IN. = 10 CH  
FEB. 23 1954  
MAR. 1, 1954

8 S. E.

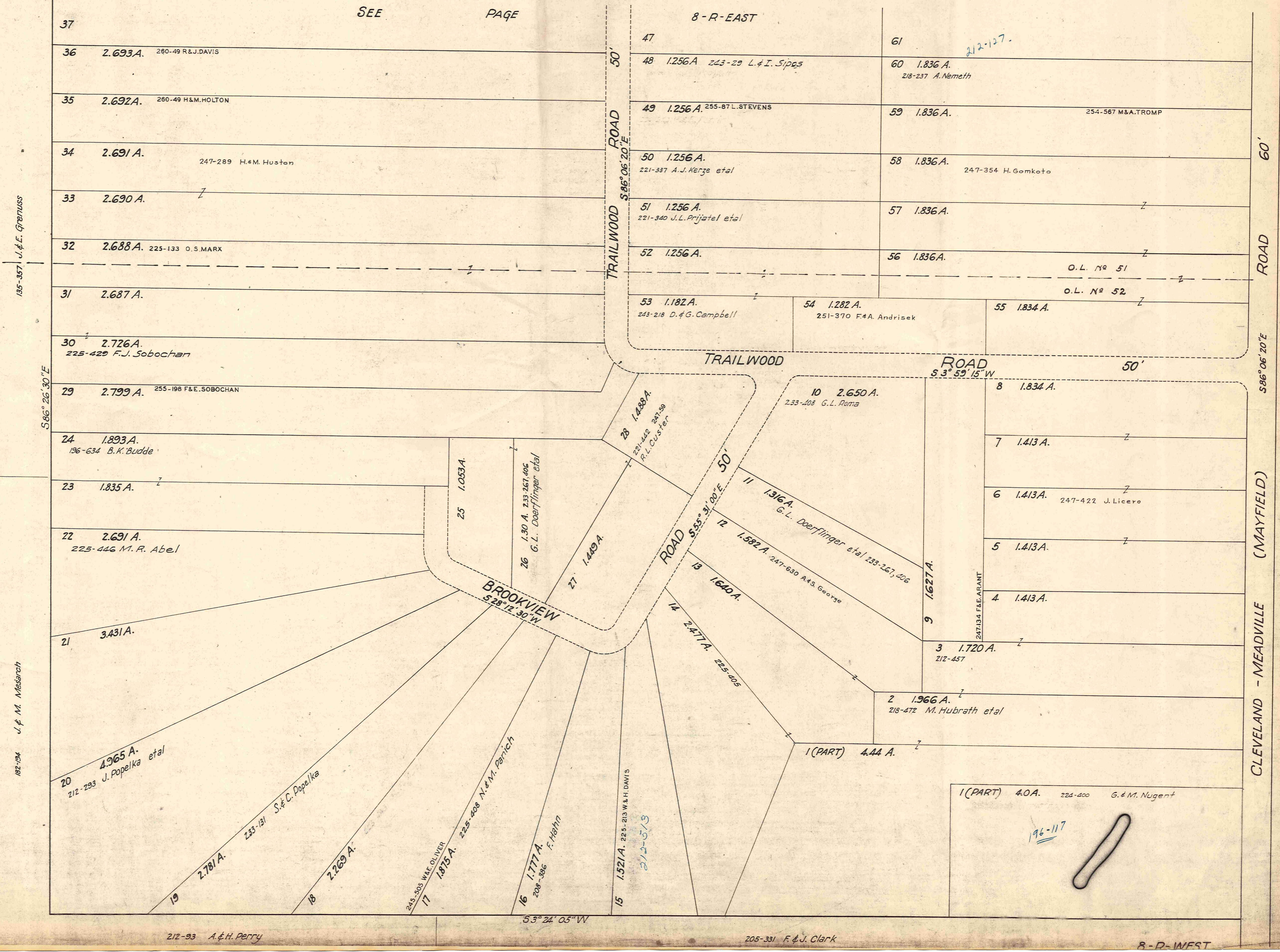
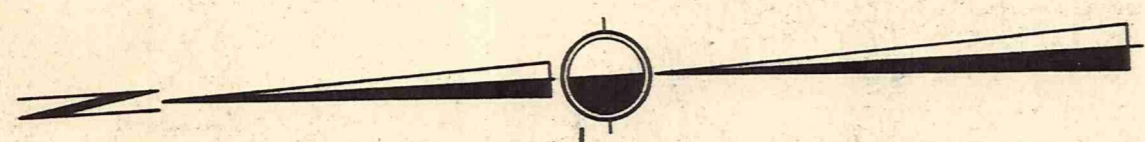


SCALE 1 INCH = 100 FEET  
MAR. 1, 1954

# HUNTSDALE SUBDIVISION (NOT RECORDED)

IN ORIGINAL LOTS NOS. 51 AND 52 OF HUNTSBURG TOWNSHIP

NOTE No.1 All lots, dimensions and areas are to the centers of the roads.  
NOTE No.2 The CLEVELAND - MEADVILLE (MAYFIELD) ROAD is the only dedicated public highway shown hereon.  
NOTE No.3 All lots where ownership is not indicated stand in the name of H.W. PERRIN ETAL vol. 212 pg. 496 and totals 7.61 acres of land.



135-357 J. & E. Grenuss

187-194 J. & M. Meserich

212-93 A. & H. Perry

205-331 F. & J. Clark

8-D-WEST

1 (PART) 4.0A. 224-400 G. & M. Nugent

212-127

196-117

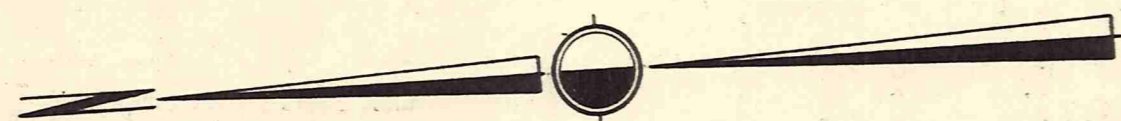
234  
234  
279

# HUNTSDALE SUBDIVISION (NOT RECORDED)

IN ORIGINAL LOTS NOS. 51 AND 52 OF HUNTSBURG TOWNSHIP

- NOTE No.1 All lots, dimensions and areas are to the centers of the roads.  
 NOTE No.2 The CLEVELAND - MEADVILLE (MAYFIELD) ROAD is the only dedicated public highway shown hereon.  
 NOTE No.3 All lots where ownership is not indicated stand in the name of H.W. PERRIN ETAL vol. 212 pg. 496 and totals 7.61 acres of land.

SCALE 1 INCH = 100 FEET  
 MAR. 1, 1954



135-357 J. & E. Grenluss  
 S 86° 26' 30" E

173-269 J. & E. Kozsok  
 S 86° 26' 30" E

